

3-BEDROOM TOWNHOUSE

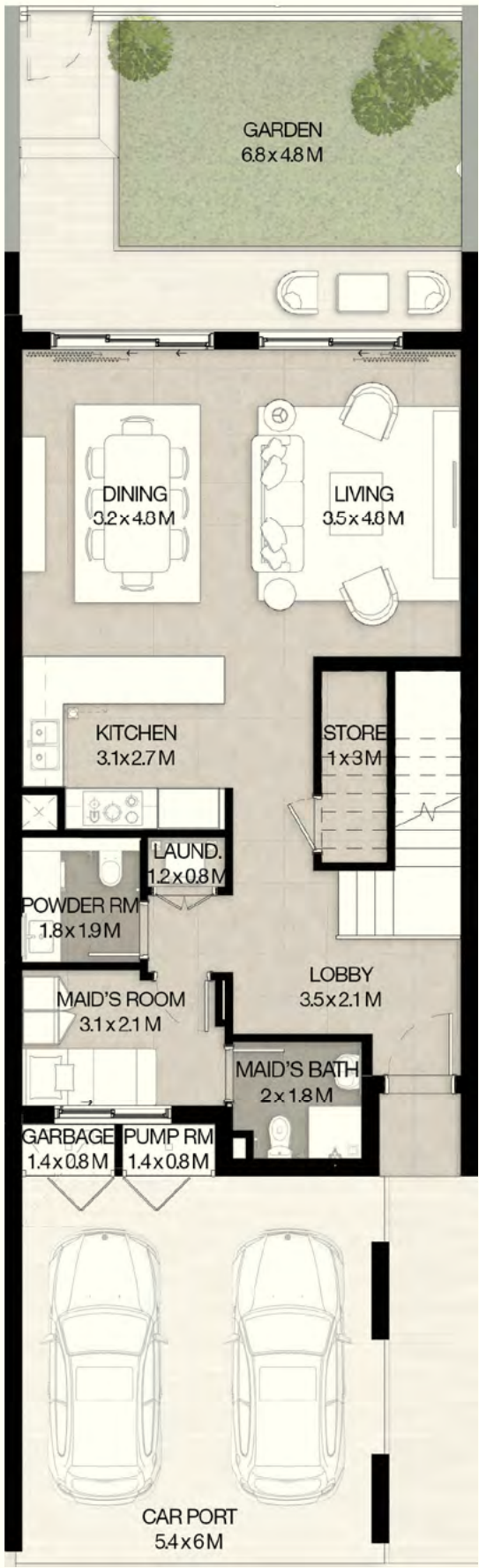
TYPE 3B2

MID UNIT

TOTAL AREA: 272.89 SQM | 2,937.36 SQFT



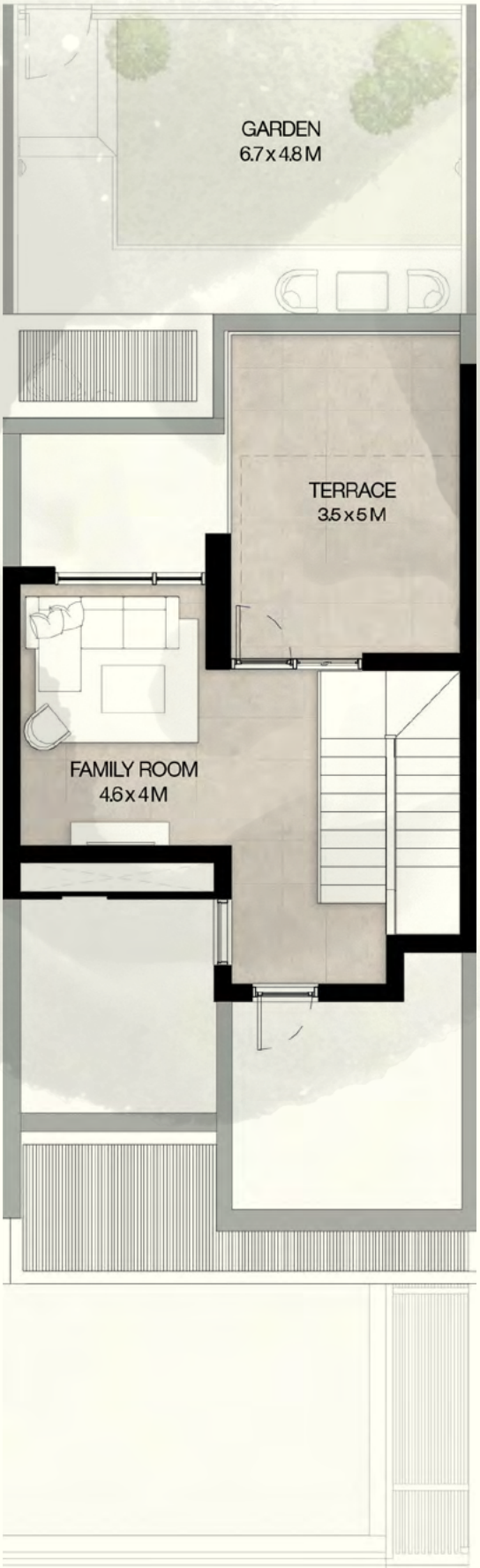
KEY PLAN



GROUND FLOOR



FIRST FLOOR



ROOF FLOOR

3-BEDROOM TOWNHOUSE
TYPE 3B2 (M)

MID UNIT
TOTAL AREA: 272.89 SQM | 2,937.36 SQFT



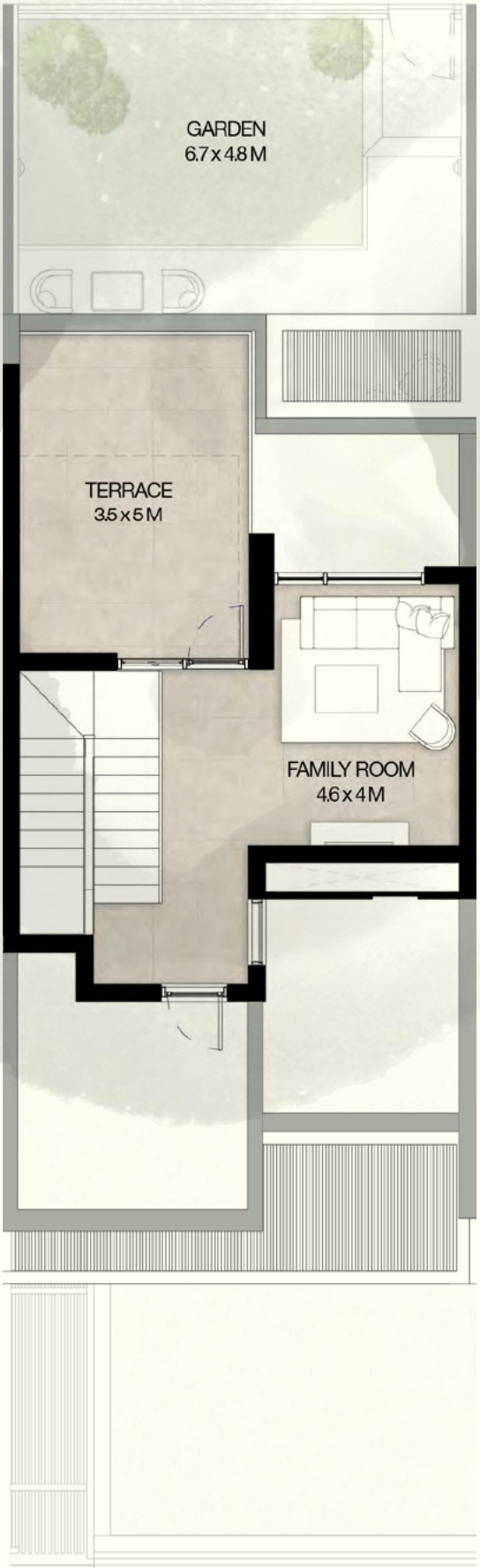
KEY PLAN



GROUND FLOOR



FIRST FLOOR



ROOF FLOOR